

PERMA-PATCH®

CRACK SEALING REINVENTED

 **DOT
APPROVED**

6690 COLD FUZE
POURABLE CRACK SEALANT



QUICK



EASY TO USE



RELIABLE



COST SAVINGS



LEARN MORE

**WORLD'S FIRST COLD POUR CRACK SEALANT
TO MEET ASTM D6690 & C920**



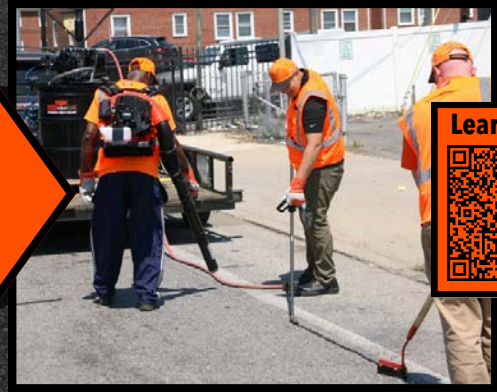
PERMAPATCH.COM | (800) 847-5744 | POTHOLE@PERMAPATCH.COM

The 6690 ColdFuze Difference



Hot Pour Crack Sealant

UP TO
**50%
COST
SAVINGS**



Cold Pour Crack Sealant

Learn More



RELIABILITY

- Meets ASTM Specifications:
 - ASTM 6690 Crack Sealants
 - ASTM C920 Joint Sealants
- 400°F Melting Temperature that can withstand summer heat

EASY TO USE

- 10 minute start up & water cleanup
- Open to traffic within 15 minutes
- Seal any day over 40°F & no need for precise temperature control
- No burn protection equipment required

COST SAVINGS

- Equipment Savings: No costly kettle and wand required
- Seal 50% more per hour per worker
- Zero waste & Near-zero fuel cost
- No need to over band = less material needed

Ready To Get Started?



Get started today with our Starter Kit.
Includes (1) 55 Gallon Drum, Pump Assembly, Hose, & Wand



1 Gallon Jug PP-CF-B1
55 Gallon Drum PP-CF-B55

1 Gallon Jug PP-CF-G1
55 Gallon Drum PP-CF-G55

Starter Kit PP-CF-SK
Pump Only PP-CF-55PUMP

