

PERMA-PATCH®

BLACK FILL®



## REVOLUTIONARY TECHNOLOGY

TOP COAT REVITALIZATION & DEEP CRACK SEALING



FAST-SETTING



READY TO USE



ONE COAT



LEARN MORE





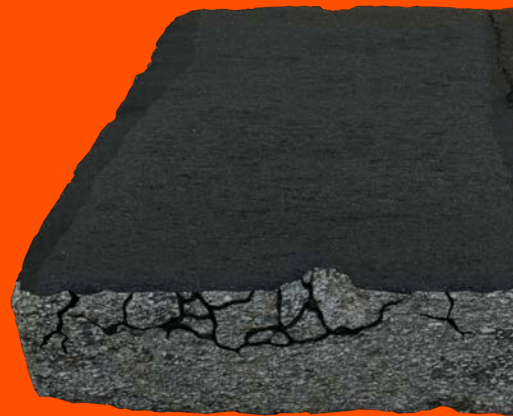
PERMA-PATCH.

# BLACK FILL<sup>®</sup>

## EXTEND THE LIFE OF YOUR PARKING LOT, DRIVEWAY, OR ROAD FOR A FRACTION OF THE COST

### The Black Fill Difference

Perma-Patch Black Fill utilizes revolutionary technology that enables you to seal deep cracks while restoring the surface's top coat at the same time. That means you can renew your pavement for a fraction of the cost of repaving. With no need for heavy equipment, you can fix your pavement issues immediately with zero hassle, while also saving money.



### SPECIALLY FORMULATED TO REPAIR:



PARKING LOTS



LOCAL ROADS



DRIVEWAYS



PARKS & RECREATION



5 Gallon Pail

PP-BF-5

36 pails per pallet

720 pails per truckload



55 Gallon Drum

PP-BF-55

4 drums per pallet

76 drums per truckload



275 Gallon Tote

PP-BF-275

1 tote per pallet

20 totes per truckload